



2208 | mushroom medley NCS 5005 - Y50R LRV 21%



2206 | oyster shell NCS 3502 - Y LRV 43%



2210 | hot salsa NCS 3560 - Y90R LRV 11%



2187 | brown rice NCS 4010 - Y30R LRV 34%



2182 | potato skin * NCS 4005 - Y20R LRV 28%



2211 | tangerine zest NCS 2070 - Y60R LRV 20%



2186 | blanched almond * NCS 3020 - Y20R LRV 34%



2162 | duck egg NCS 5005 - B80G LRV 25%



2212 | fresh pineapple NCS 3030 - G90Y LRV 40%



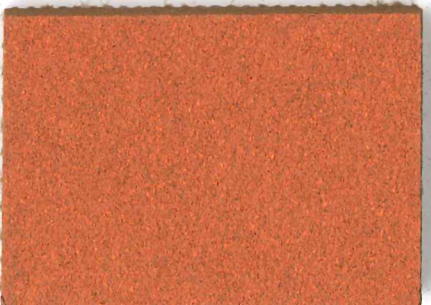
2166 | nutmeg spice * NCS 4030 - Y30R LRV 22%



2204 | poppy seed NCS 6500 - N LRV 16%



2213 | baby lettuce NCS 4030 - G30Y LRV 23%



2207 | cinnamon bark NCS 4040 - Y50R LRV 18%



2209 | black olive NCS 9000 - N LRV 5%



2214 | blue berry NCS 6030 - B LRV 6%